

# The "M's" Have It!

*Exciting Offspring of Foxberry Stream Myra 619-ET (VG-86-DOM)*

**GTPI +2089**



**COYNE-FARMS G CHIP MAUD-ET**  
(GP-83, VG-MS @ 2-04)

PTA +607M +34F +14P +431NM +3.1PL 2.85SCS +1.1DPR  
PTA +3.42T +2.94UDC +3.63FLC  
*Gold Chip x Myra*

**GTPI +2052**



**COYNE-FARMS SHAMROCK MAY-ET**  
(VG-85, VG-MS @ 2-09)

PTA +1000M +54F +26P +530NM +4.5PL 3.06SCS +1.6DPR  
PTA +2.22T +2.06UDC +1.19FLC  
*Shamrock x Myra - Full sister to Mack*

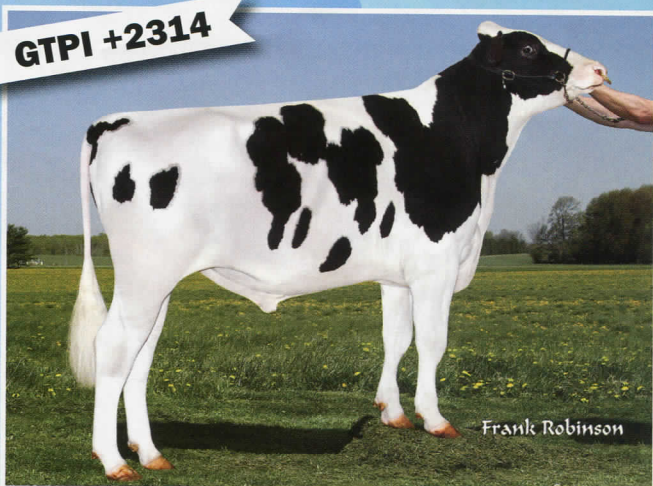
**GTPI +2409**



**COYNE-FARMS UNO MAPLE-ET**

PTA +1047M +77F +38P +759NM +6.5PL 2.94SCS +3.00 DPR  
PTA +3.01T +2.74UDC +2.20FLC  
*Numero Uno x Myra - 173 Pts. above Parent Average!*

**GTPI +2314**



**COYNE-FARMS SROCK MACK-ET 7H011853**

+1286M +72F +39P +695NM +5.7PL +1.3DPR +2.7SCR  
+3.14T +2.66UDC +2.08FLC  
*Shamrock x Myra - at Select Sires*

**Myra was purchased in the 2010 Legends of the Fall Sale and has proven to be a great investment! Her dam is a 2E-92 GMD-DOM Outside with 1887f, followed by a 3E-94 GMD-DOM Rudolph with 1559f & 188,900 4.0 7489 3.4 6466 lifetime.**

*We welcome your interest in this family & all our genetics.*

**COYNE FARMS, INC.**

Routes 5 & 20 • Avon, NY 14414

Cell: 585-202-1327 • Fax: 585-226-8391 • Email: coynebwa@aol.com • www.coynefarms.com