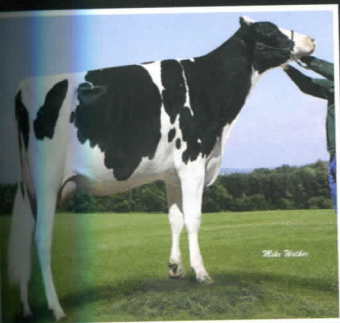


Building on the Myra Family

+2312 GTPI



COYNE-FARMS MCCUTH MACY-ET (NC)
1-11 3x 147 11,875 4.1 490 2.7 323 (Inc.)
PR +680M +43F +25P +432NM +3.5PL +1.0DPR
PTA +2.43T +2.53UDC +2.00FLC
Kutchen x Foxberry Stream Myra 619-ET (VG-86
GMD-DOM) w/2-02 3x 365 30,750 3.9 1204 3.0
935, then 2E-92 GMD-DOM Outside w/1887f
and 3E-94 GMD-DOM Rudolph w/1589f &
188,900M lifetime.

+2149 GTPI



COYNE-FARMS SHAMROCK MAY-ET
(VG-85, VG-MS @ 2-09)
2-03 3x 327 31,540 4.1 1280 2.8 876
3-03 3x 346 30,492 4.7 1431 3.0 929
PTA +546M +39F +13P +403NM
+3.9PL +2.7DPR
PTA +1.05T +1.18UDC +.43FLC
Shamrock x Myra

+2341 GTPI



COYNE-FARMS YOWZA MED-ET
(GP-82 @ 2-03)
2-00 3x 155 13,235 3.8 507 3.1 404 (Inc.)
PTA +573M +41F +28P +546NM
+5.6PL +2.6DPR
PTA +1.43T +1.80UDC +.95FLC
148 Points above Parent Average! Co-Op
Bookem Yowza-ET x Shamrock May

To the National Convention Sale

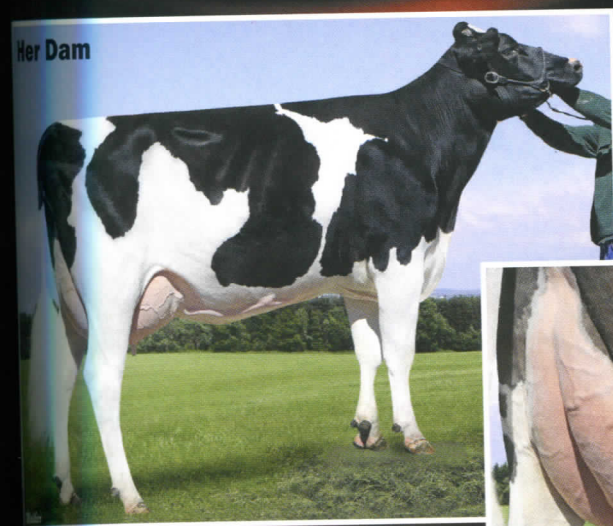
One of the Highest Red & Whites of the Breed!

COYNE-FARMS PT SILKY-RED-ET b. 9/13/2015 - GTPI +2418

PTA 1698M +81F +70P +661NM +2.9PL

PTA +1.34T +1.02UDC +.42FLC

117 Points Above Parent Average!



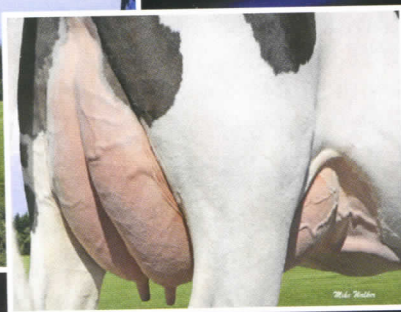
HARTFORD HYDRO SAVOR 504-ET (NC) - GTPI +2123

1-10 3x 213 20,042 3.9 790 2.8 565 (Inc.)

+1631M +48F +44P +389NM +1.58T

AltaHydro x VG-86 Epic x Des-Y-Gen Planet Silk-ET *RC

(EX-90, EX-MS), then 8 gens. VG & EX in the
Glen-Drummond Shower-ET family!



Silky is sired by

7H012436 Coyne-Farms Sympati

Pat-Red - GTPI +2479

PTA +1380M +.06%f +67F +.03%p +49P

+687NM +5.3PL 2.72SCS +.2DPR

PTA +1.68T +1.76UDC +1.18FLC

Very high conception rate at +2.9!

Sympatico son from the Richmond-
FD Ramos Poppy (2E-91-DOM) family
available at Select Sires!

COYNE FARMS, INC.

Routes 5 & 20 • Avon, NY 14414

Cell: 585-202-1327 • Fax: 585-226-8391 • Email: coynebw@aol.com • www.coynefarms.com

Inquiries are always welcome.