

Combining Two of Our Best Cow Families

GTPI +2381

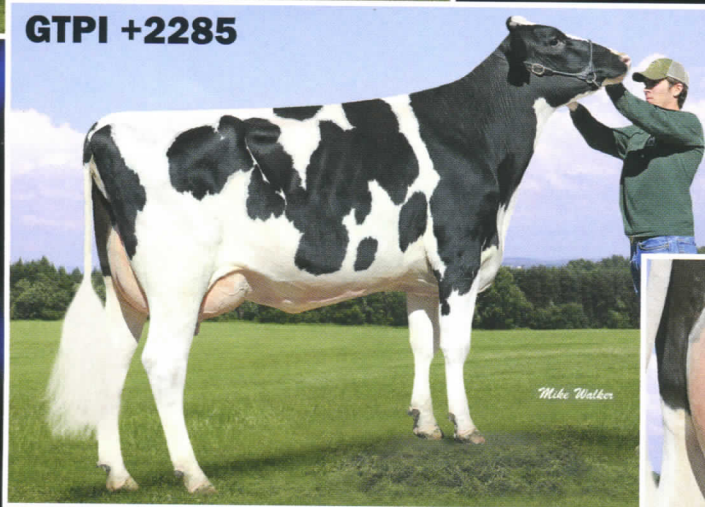


COYNE-FARMS JABIR DEE-ET (VG-85, VG-MS @ 2-03)

2-00 3x 156 15,587 4.5 706 2.8 440 (Inc.)
PTA +1150M +81F +38P +556NM 2.87SCS +.4DPR +2.09T



GTPI +2285

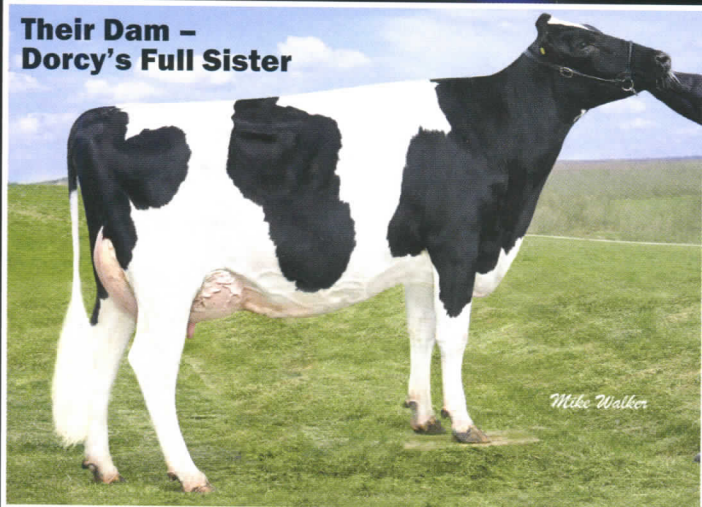


COYNE-FARMS JABIR DEB-ET (GP-82@ 2-03)

2-00 3x 136 10,943 4.1 453 2.9 322 (Inc.)
PTA +979M +58F +35P +478NM
2.78SCS +.3DPR +1.67T



**Their Dam –
Dorcy's Full Sister**



COYNE-FARMS BOLT DIEDRA-ET (EX-90, EX-MS GMD-DOM)

2-04 3x 365 34,060 4.7 1599 2.9 1000
4-09 3x 365 40,710 4.1 1681 2.9 1191
Next dam is Bret Daffers (EX-91-DOM) w/1504f.

Dee & Deb are sired by
200H03877 COYNE-FARMS JABIR-ET
GTPI +2412 at Semex –
PTA +481M +.13%f +55F +.05%p +29P
+589NM +5.8PL 2.72SCS +4.7DPR
PTA +1.13T +.41UDC +1.41FLC
Facebook x Coyne-Farms Freddie Jill-ET
(VG-86), then Ramos Jelly-ET (VG-85-DOM).

**We welcome your visit when
traveling to the National Holstein
Convention! We are just 15
minutes south of the NY State
Thruway at Exit 46.**