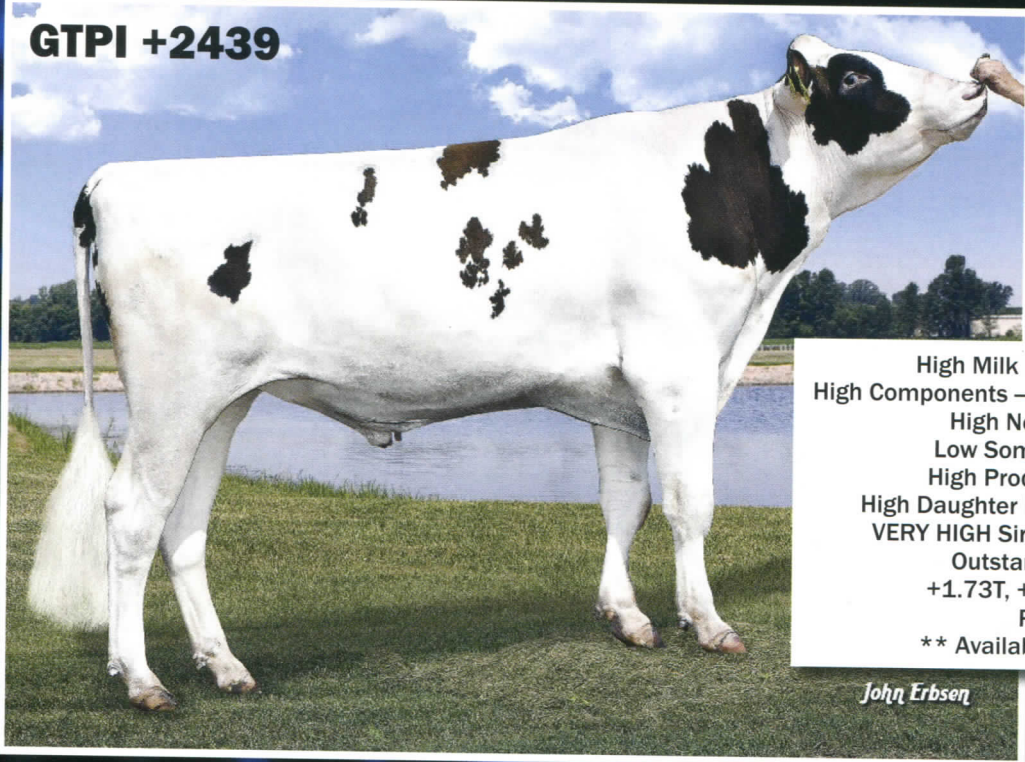


Pat-Red...

Check His Credentials!

GTPI +2439



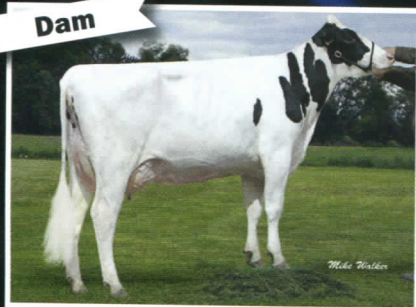
**7H012436
COYNE-FARMS
SYMPATI
PAT-RED**

High Milk Production – +1309M
 High Components – +.04%fat, +62F, +.03%p +46P
 High Net Merit – +640NM
 Low Somatic Cell – 2.75SCS
 High Productive Life – +5.0PL
 High Daughter Pregnancy Rate at +.3DPR
 VERY HIGH Sire Conception Rate – +3.4
 Outstanding Type Traits –
 +1.73T, +1.81UDC, +1.29FLC
 Red & White
 ** Available from Select Sires!

John Erbsen

His Outstanding Maternal Line

Dam

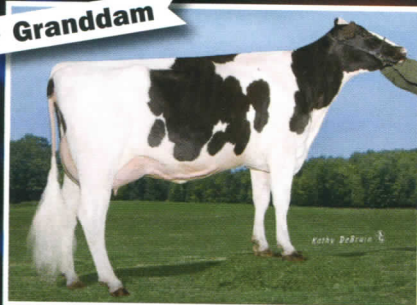


**BUTLERVIEW COLT PRAIRIE-ET *RC
(VG-86, VG-MS) – GTPI 2176**

1-11 3x 365 30,230 3.8 1144 3.3 1001

An exciting Colt-P, Prairie has an outstanding group of daughters here and her daughters have done well for other breeders.

Granddam

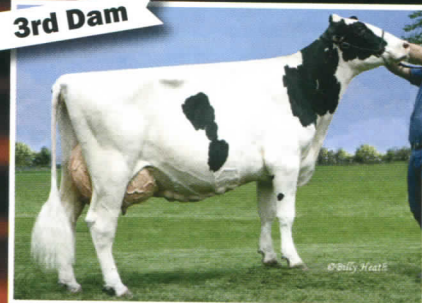


**RICHMOND-FD POMPEY-ET
(EX-91, EX-MS) DOM – GTPI +2330**

3-10 3x 305 30,050 4.3 1282 3.1 938

Former #2 Massey dtr. in the Breed

3rd Dam



**RICHMOND-FD RAMOS POPPY
(2E-91, EX-MS DOM) – GTPI +2011**

3-04 3x 365 36,110 4.1 1489 3.1 1126

Next dam is VG-85

w/42,190 3.3 1406 3.1 1287.

**We welcome your visit to see Pat's cow family & other high-profile cows when you are traveling to the Holstein National Convention in June!
We are just 15 minutes south of the NY State Thruway at Exit 46.**

COYNE FARMS, INC.

Routes 5 & 20 • Avon, NY 14414

Cell: 585-202-1327 • Fax: 585-226-8391 • Email: coynebw@aol.com • www.coynefarms.com

Inquiries are always welcome.